

Ethernet Interface Setting Manual  
**A8 PRIME Receipt Printer**



# User Manual

(Revision 1.0.1)

2019-07-23

## 목차

1. Manual Information .....	3
2. Product Specification .....	3
3. Settings via Web Server .....	4
3-1 Static IP Setup .....	4
3-2. DHCP (Dynamic IP) Setup .....	8
4. Test through Windows Driver's "Print Test Page" .....	8
5. Ping Test .....	9
6. Check Printer Settings .....	10

## 1. Manual Information

This manual describes how to use the Ethernet interface.

POSBANK is continuously improving the function and quality of products.

As such, the specifications of the product and the contents of the manual are subject to change without prior notice.

## 2. Product Specification

- TCP, UDP, ICMP, IPv4, ARP, IGMP
- 10 Base-T / 100 Base-TX Ethernet PHY Embedded
- Support Auto-Negotiation (Full & Half Duplex, 10 & 100 Based)
- Un-attackable hardware network engine for preventing network attacks such as flooding, spoofing injection

### 3. Settings via Web Server

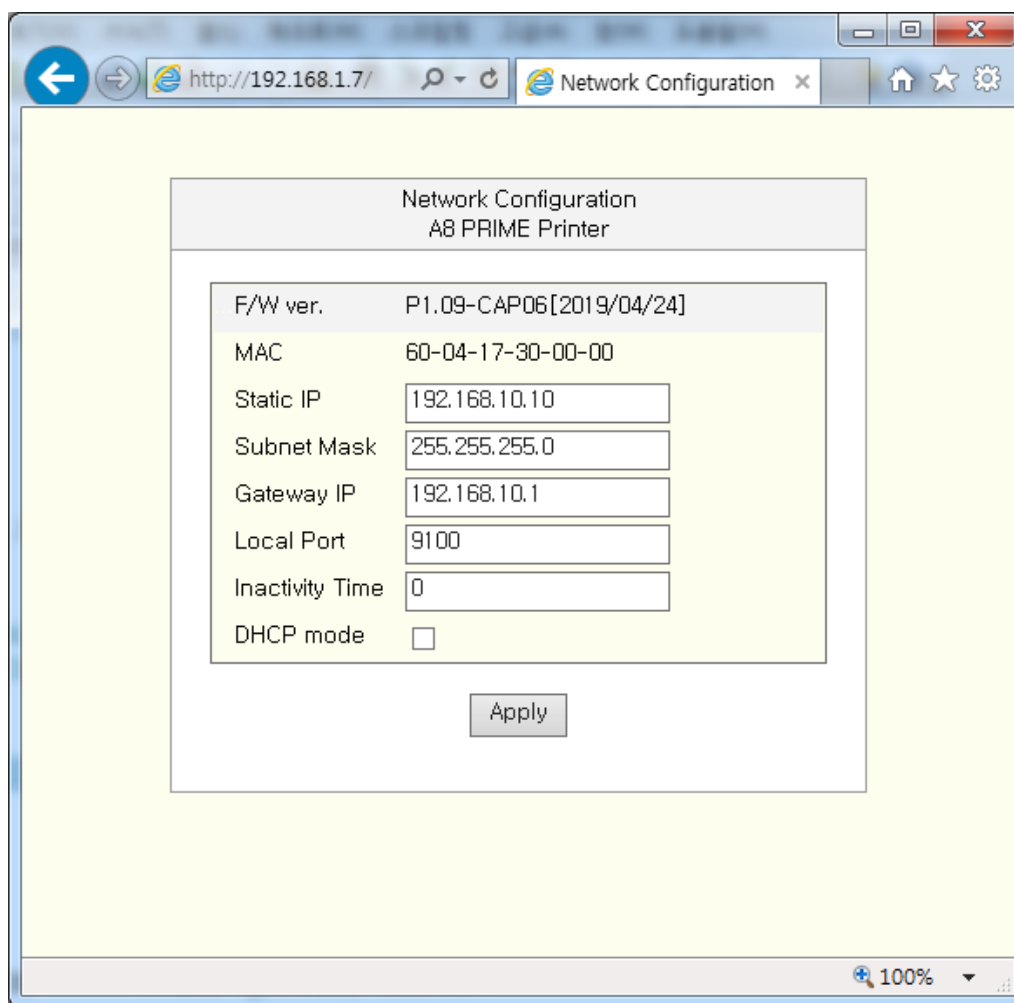
#### 3-1 Static IP setup

1) Factory default value for the printer is "IP=192.168.10.10".

In the Network Setting of the PC or POS equipment, specify IP=192.168.10.xxx and connect the cable directly.

2) Open the Internet Browser.

3) Enter the printer's IP in the Internet Browser address field and click "Go".

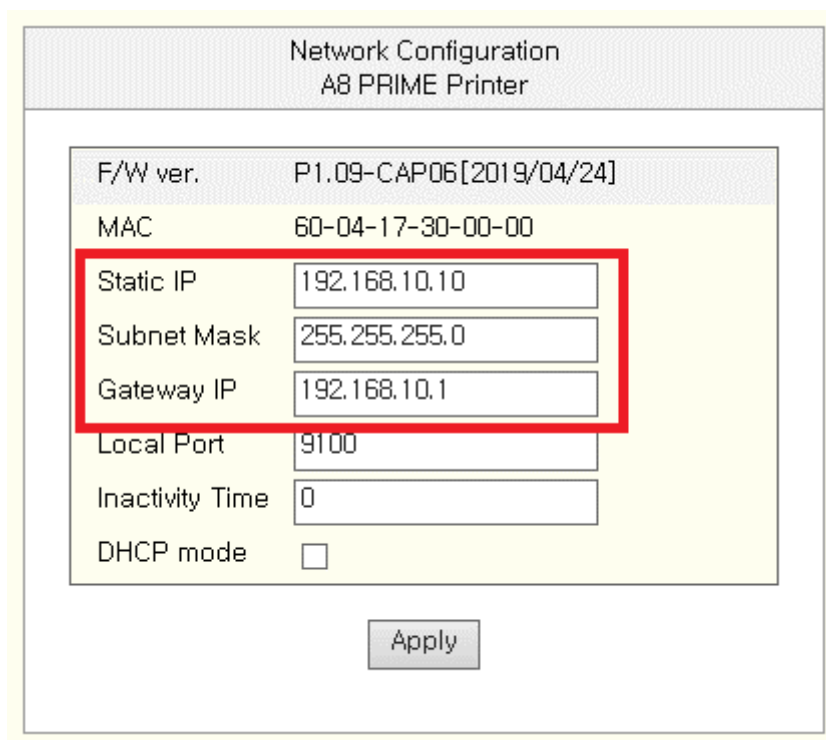


[Note]

- ✓ If you do not know the IP address, check the currently set IP through the self-test function of the printer.
- ✓ Contact your network administrator for IP and related information.

4) When the window screen is displayed, specify new network setting value.

Depending on the IP change the network connection with PC or POS equipment will disconnect. Close the Internet Browser.



Network Configuration A8 PRIME Printer	
F/W ver.	P1.09-CAP06[2019/04/24]
MAC	60-04-17-30-00-00
Static IP	192.168.10.10
Subnet Mask	255.255.255.0
Gateway IP	192.168.10.1
Local Port	9100
Inactivity Time	0
DHCP mode	<input type="checkbox"/>

Apply

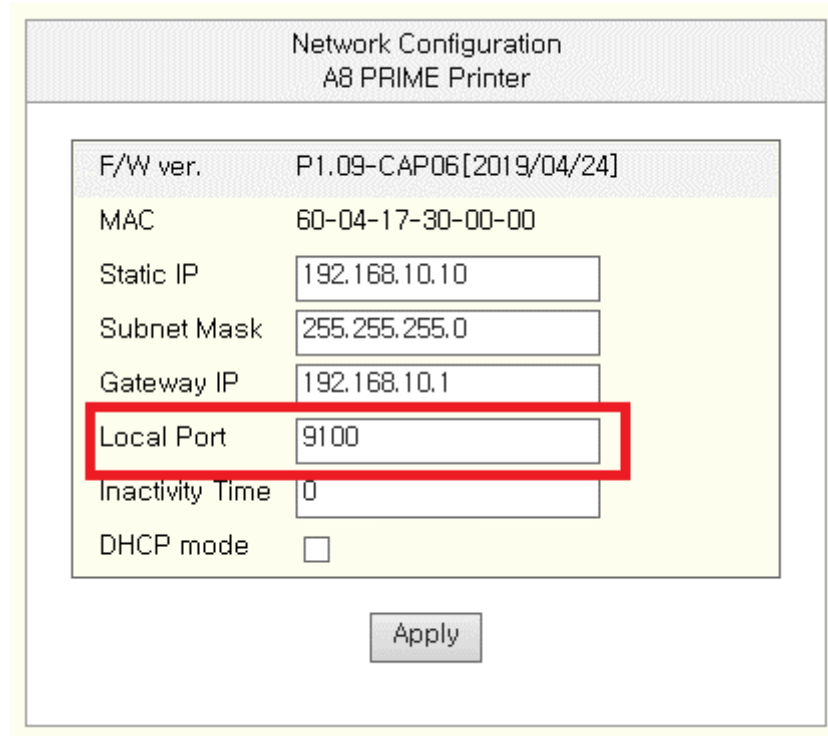
[Note]

- ✓ If you do not know Subnet Mask, input as below.
- ✓ If first digits of the IP address is:
  - ① 1~126.xxx.xxx.xxx then use Subnet Mask: 255.0.0.0
  - ② 128.191.xxx.xxx.xxx then use Subnet Mask: 255.255.0.0
  - ③ 192~253.xxx.xxx.xxx: then use Subnet Mask: 255.255.255.0
- ✓ For example, if the IP address is 192.168.10.10 then use 255.255.255.0
- ✓ If you do not know the Gateway IP, input as below.
  - ① If the network is connected to the internet (connected to a router or a server computer), refer to the network information of the computers on the same network.
  - ② If the network is not connected to the internet (not connected to a router or a server computer), input 0.0.0.0.

5) **"Local Port"** Setting

Default = 9100, Windows driver is also installed / operated on port 9100.

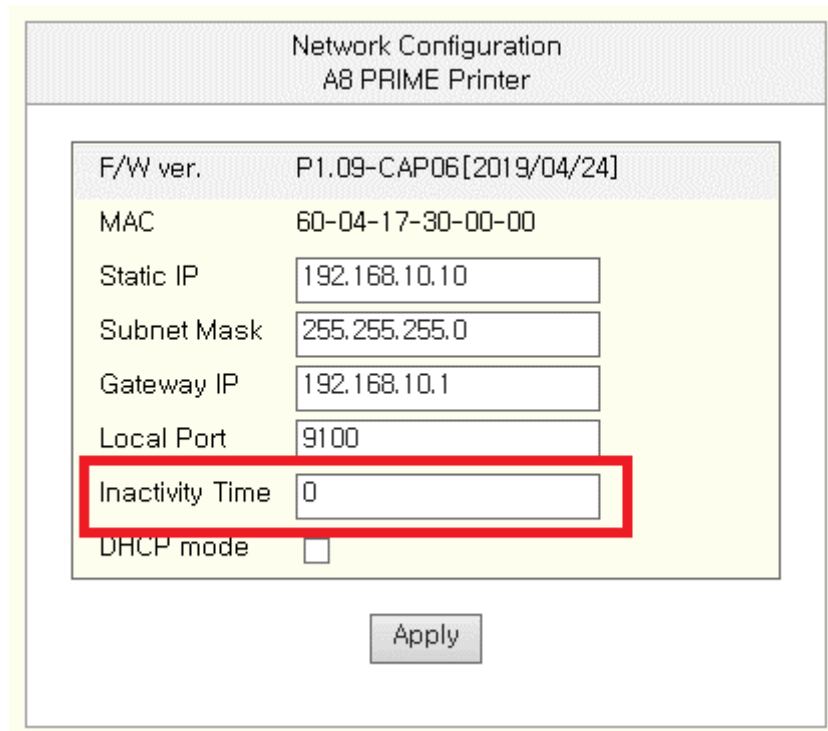
If changed to a different port number, the port number of the Windows driver and application program must be changed.



Network Configuration  
A8 PRIME Printer

F/W ver.	P1.09-CAP06[2019/04/24]
MAC	60-04-17-30-00-00
Static IP	<input type="text" value="192.168.10.10"/>
Subnet Mask	<input type="text" value="255.255.255.0"/>
Gateway IP	<input type="text" value="192.168.10.1"/>
Local Port	<input type="text" value="9100"/>
Inactivity Time	<input type="text" value="0"/>
DHCP mode	<input type="checkbox"/>

6) **"Inactivity Time"** Setting



Network Configuration  
A8 PRIME Printer

F/W ver.	P1.09-CAP06[2019/04/24]
MAC	60-04-17-30-00-00
Static IP	<input type="text" value="192.168.10.10"/>
Subnet Mask	<input type="text" value="255.255.255.0"/>
Gateway IP	<input type="text" value="192.168.10.1"/>
Local Port	<input type="text" value="9100"/>
Inactivity Time	<input type="text" value="0"/>
DHCP mode	<input type="checkbox"/>

[Note]

- ✓ Inactivity time is when the Host (PC) connects to the printer's TCP port and forces the printer to terminate the connection if there is no data transmission during the specified inactivity time. We recommend using this feature if one printer is used for multiple hosts.
- ✓ (If you do not disconnect from one Host, other hosts may have limited printer usage)
- ✓ Default value is 0, value can be changed to 0 ~ 32767(0x7fff). (Up to 9 hours 6 minutes 7 seconds)

If Inactivity time is specified, the Ethernet connect will be disconnected after the set time.

If set to "0", forced disconnection function will not work.

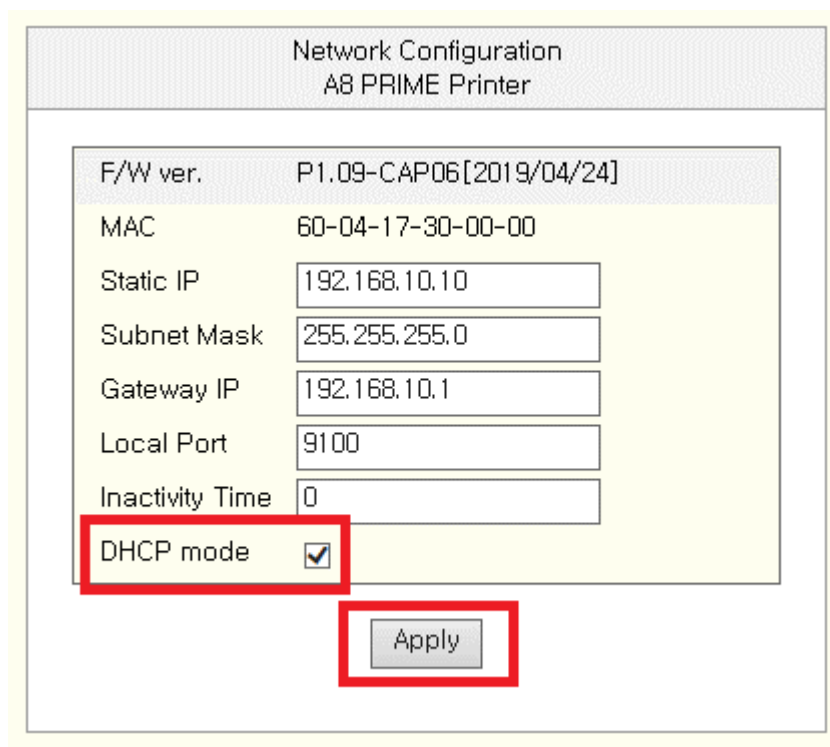
7) When finished, press "Apply".

**Network Configuration**  
**A8 PRIME Printer**

F/W ver.	P1.09-CAP06[2019/04/24]
MAC	60-04-17-30-00-00
Static IP	<input style="width: 100%;" type="text" value="192.168.10.10"/>
Subnet Mask	<input style="width: 100%;" type="text" value="255.255.255.0"/>
Gateway IP	<input style="width: 100%;" type="text" value="192.168.10.1"/>
Local Port	<input style="width: 100%;" type="text" value="9100"/>
Inactivity Time	<input style="width: 100%;" type="text" value="0"/>
DHCP mode	<input type="checkbox"/>

### 3-2. DHCP (Dynamic IP) Setup

- 1) To set Static IP for printer using Internet Browser, follow steps 1 to 3 in section "3-1 Static IP Setup"
- 2) Select "**DHCP mode**" and press "**Apply**" button.



Network Configuration A8 PRIME Printer	
F/W ver.	P1.09-CAP06[2019/04/24]
MAC	60-04-17-30-00-00
Static IP	<input type="text" value="192.168.10.10"/>
Subnet Mask	<input type="text" value="255.255.255.0"/>
Gateway IP	<input type="text" value="192.168.10.1"/>
Local Port	<input type="text" value="9100"/>
Inactivity Time	<input type="text" value="0"/>
DHCP mode	<input checked="" type="checkbox"/>
<input type="button" value="Apply"/>	

- 3) To check the IP address assigned through DHCP Server, turn off the printer and turn on the power while holding down the FEED button.
- 4) Changes to the "**DHCP mode**" can be done through "**Setting Mode**"

Turning off the printer and turning on the power while pressing the FEED button will go to Self\_Test printing, the press the FEED button again for 3 seconds to enter "Setting Mode". Press the FEED button 16 times to reach "16. DHCP Mode" and DHCP function can be turned on or off.

[Note]

When changing DHCP mode from Enable to Disable, the network related information will be changed to the factory default value. (IP=192.168.10.10, Subnet Mask=255.255.255.0, Gateway=192.168.10.1, Local Port=9100, Inactivity Time=0)

### 4. Test through Windows Driver's "Print Test Page"

- ✓ Refer to the User's Manual of the Windows driver



## 5. Ping Test

- 1) In Command Prompt (cmd.exe) ping 192.168.xxx.xxx to test connectivity

```

ca. 관리자: C:\Windows\system32\cmd.exe
C:\W>
C:\W>
C:\W>ping 192.168.1.7

Ping 192.168.1.7 32바이트 데이터 사용:
192.168.1.7의 00000000: 바이트=32 시간<1ms TTL=128
192.168.1.7의 00000000: 바이트=32 시간<1ms TTL=128
192.168.1.7의 00000000: 바이트=32 시간<1ms TTL=128
192.168.1.7의 00000000: 바이트=32 시간<1ms TTL=128

192.168.1.7에 대한 Ping 통계:
   패킷: 보냄 = 4, 받음 = 4, 손실 = 0 (0% 손실),
   왕복 시간(밀리초):
     최소 = 0ms, 최대 = 0ms, 평균 = 0ms

C:\W>_
  
```

## 6. Check Printer Settings

# A8 PRIME

( Model : A8 PRIME )  
F/W P1.09-CAP06[2019/04/24]

\*\*\*\*\*


```

[ Print Speed ] - - - - -> Lv1 [250mm/s]
[ Print Density ] - - - - -> Lv1 [LIGHT ]
[ Characters ] - - - - -> 42 Char/Line
[ Temperature ] - - - - -> 28.4
[ External FONT ] - - - - -> Unicode
[ Code Page ] - - - - -> cp949
[ Error Sound ] - - - - -> No Sound
[ Auto Cut ] - - - - -> Install(Feed)
[ Auto Cut Mode] - - - - -> Programmable
[ Interface 1 ] - - - - -> Serial
[ Interface 2 ] - - - - -> Ethernet
[ Baudrate ] - - - - -> 9600
[ Parity-bit ] - - - - -> None
[ Handshaking ] - - - - -> DTR/DSR
[ USB Mode ] - - - - -> Actual USB
[ Paper Width ] - - - - -> 80mm
[ Paper Type ] - - - - -> TF50KS-E2D
[ Black Mark Mode ] - - - - -> Disable
[ Auto Load Mode ] - - - - -> Disable
[ Sensing Level ] - - - - -> Level 7
[ Mark Range ] - - - - -> 169mm
    
```

----- Ethernet Configuration -----

```

[ DHCP mode ] Disable (Static IP)
[ Static IP ] 192.168.10.10
[ Gateway IP ] 192.168.10.1
[ Subnet Mask ] 255.255.255.0
[ Local Port ] 9100
[ Inact. Time ] 0
[ MAC Address ] 60-04-17-30-00-00
    
```



\*\*\*\*\*

If you want to continue  
Please press the FEED button

- End -